

Push-On Knobs

x= outer diameter
y= height



531
x= .60
y=.47



325
x= .62
y=1.13



1334
x=.76
y=.63



268
x=.77
y=.64



246
x=.78
y=.65



285
x=.88
y=.59



321
x=.88
y=.77



231
x=.90
y=.67



6
x=.91
y=.57



266
x=1.11
y= .64



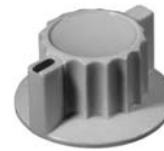
281
x= 1.12
y= .59



363
x=1.13
y= .65



444
x=1.14
y= .52



359
x=1.14
y= .58



112
x=1.14
y= .67



361
x=1.14
y= .73



427
x=1.20
y= .82



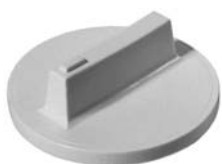
208
x=1.46
y= .89



163
x=1.55
y= .47



360
x= 1.63
y= .50



360
x=1.66
y= .53



628
x=1.66
y= .81



421
x=2.27
y= .87



519
x= 2.33
y=1.00



483
x= 2.66
y=1.12