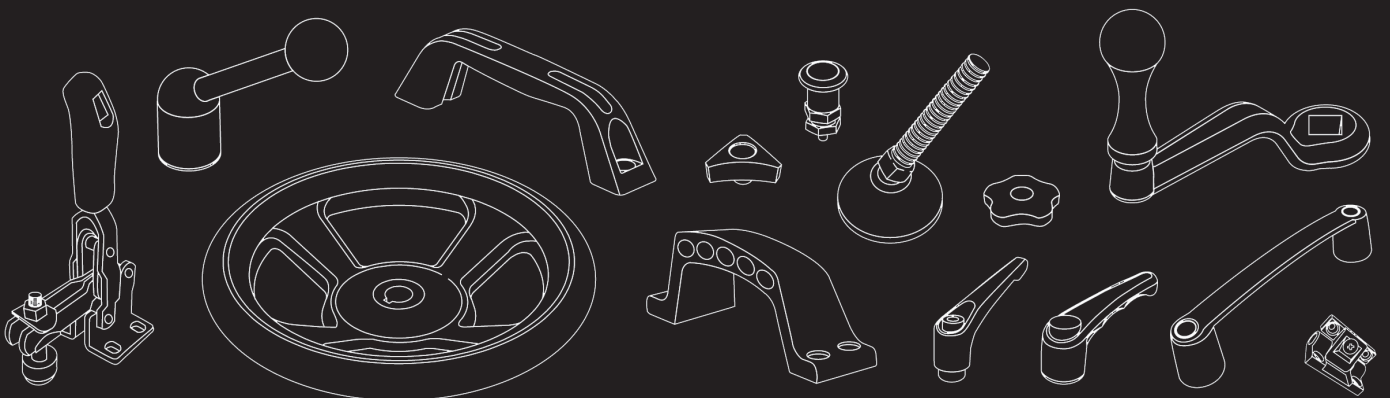


Industrial Components Overview

EHC

www.ehcunltd.com

*Beyond control knobs ...
Components and assemblies within your reach.*



Global Manufacturing Outsourcing Facilities on 3 Continents

Adjustable Ratchet Handles - Metal



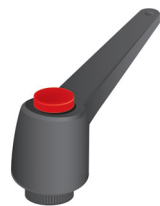
Material: die-cast zinc handle with steel or stainless steel inserts
Versions: male and female
Handle length: 1.68"/ 2.6"/ 3.12"/ 3.68"/ 4.32"
 Metric: 42 / 65 / 78 / 92 / 108 mm
Standard thread sizes: from #10-32 to 5/8-11
 Metric: M5 to M16
Standard color: black.
 Other colors available on request - MOQs apply

Control Handwheels - Plastic



Material: matt finish glass filled nylon w. steel inserts
Versions: solid or spoked, with pilot bores, with or without side handles (fixed, revolving or folding)
Diameters (Spoked): 4"/ 5.2"/ 6.4"/ 8"/ 10"
 Metric: 100 / 130 / 160 / 200 / 250 mm
Diameters (Solid): 4"/ 5"/ 6"/ 7"/ 8"
 Metric: 100 / 125 / 150 / 175 / 200 mm
Bore sizes: pilot bores typically .32" (8 mm).
 Other bores available on request
Special options include: keyways, side holes, square bores - MOQs apply.

Adjustable Ratchet Handles - Plastic



Material: matt finish glass filled nylon
Versions: male (zinc plated steel threads) or female (brass inserts)
Handle lengths: 1.72"/ 2.60"/ 3.32"/ 4.16"
 Metric: 43 / 65 / 83 / 104 mm
Standard thread sizes: from #10-32 to 5/8-11
 Metric: M5 to M16
Standard colors (handle/cap): black/red, black/black, orange/grey
Available cap colors: black, grey, red, orange, green, blue, yellow and white.*

Aluminum Handwheels



Material: aluminum handwheel with thermoset revolving side handle
Diameters: 5"/ 5.6"/ 6.4"/ 8"
 Metric: 125 / 140 / 160 / 200 mm
Standard bore sizes: from .48" to .72"
 Metric: 12 to 18 mm
Number of spokes: 2
Options: special bore machining on request - MOQs apply

Adjustable Ratchet Handles - Ergonomic



Material: matt finish glass filled nylon
Versions: male (zinc plated steel threads) or female (brass inserts)
Handle lengths: 1.72"/ 2.60"/ 3.32"/ 4.16"
 Metric: 43 / 65 / 83 / 104 mm
Standard thread sizes: from #10-32 to 5/8-11
 Metric: M5 to M16
Standard colors (handle/cap): black/red, black/black, orange/grey
Available cap colors: black, grey, red, orange, green, blue, yellow and white.*

Steel Handwheels



Material: steel
Diameters: 5"/ 6.4"/ 8"/ 10"
 Metric: 125 / 160 / 200 / 250 mm
Standard bore sizes: from .44" to .68"
 Metric: 11 to 17 mm
Number of spokes: from 3 to 5
Options: special bore machining on request - MOQs apply

Cranking Handles - Cast Iron



Material: cast iron crank with polished steel side handle
Handle lengths: 4"/ 5"/ 6.6"/ 8"
 Metric: 100 / 125 / 165 / 200 mm
Fixing: Square drive (bore) .48"/ .56"/ .68"/ .76"
 Metric: 12 / 14 / 17 / 19 mm
Special Bores: on request. MOQs may apply

Stainless Steel Handwheels



Material: stainless steel
Diameters: 6.4"/ 8"/ 10"
 Metric: 160 / 200 / 250 mm
Standard bore sizes: from .48" to .68"
 Metric: 12 to 17 mm
Number of spokes: 4 or 5
Options: special bore machining on request - MOQs apply

Cranking Handles - Plastic



Material: matt finish glass filled nylon with brass inserts
Versions: female, with fixed or folding side handles as standard
Handle lengths: 2.6"/ 3.2"/ 4.4"/ 5.5"/ 7.4"
 Metric: 65 / 80 / 110 / 140 / 185 mm
Standard thread sizes: from 5/16-18 to 5/8-11
 Metric: M8 to M16
 Also available with plain bores (square or round)
Standard color: black. Other colors available on request - MOQs apply

Stainless Steel Wing Knobs



Material: stainless steel
Versions: male and female
Type A: Female only 1.8"/ 2.28" (45/57 mm)
Thread sizes: from 5/16"-18" to 3/8"-16"
 Metric: M6 to M10
Type B: .98"/ 1.42" Metric: 25/36 mm
Thread sizes: from 5/16"-18" to 3/8"-16"
 Metric: M6 to M10
Options: non-standard thread sizes and lengths - MOQs apply

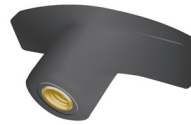
*MOQs apply for non-standard handle colors. Different cap colors are available at no extra charge and no MOQ.

Adjustable Tension Levers



Material: burnished steel with thermoset ball knob
Versions: male and female
Handle lengths: 2.8"/3.84"/4.4"
Metric: 70 / 96 / 110 mm
Standard thread sizes: from 5/16-18 to 1/2-13
Metric: M8 to M12

Tee Handles



Material: matt finish nylon and gloss or matt finish thermoset
Versions: male (zinc plated steel threads) or female (brass inserts)
Handle sizes: 1.6"/2"/2.4"/2.88"/3.2"/4"
Metric: 40 / 50 / 60 / 72 / 80 / 100 mm
Standard thread sizes: from #10-32 to 1/2-13
Metric: M5 to M12
Standard color: black. Many other colors available - MOQs apply

Bridge Handles - Plastic



Material: matt finish glass filled nylon
Versions: plain through bores for fixing with bolts from above or brass inserts for fixing with screws from below
Distance between centers: 3.74"/4.68"/5.28"/7.16"/9"
Metric: 93.5 / 117 / 132 / 179 / 225 mm
Standard thread/bore sizes: from 5/8-11 to 1/2-13, .26" or .34" . Metric: M6 to M12, 6.5mm or 8.5mm
Standard color: black. Other colors available on request - MOQs apply
Options: some models available with colored caps (grey, red, orange, green, blue, yellow and white) at no extra cost

Heavy Duty Handle - Foot Step



Material: matt finish Ultramid B3K (unfilled nylon)
Distance between centers: 5.6" Metric: 140 mm
Standard fixing: .16"x .24" socket head cap screws
Metric: 4 x 6 mm
Standard color: black. Other colors available on request - MOQs apply
Options: this heavy duty handle features a flat edge with protruding areas for extra grip. When mounted on a wall or vertical surface it is suitable as a foot step application.

Folding Bridge Handles



Material: chrome plated steel
Distance between centers: 4"/4.8"/7.2"
Metric: 100 / 120 / 180 mm
Thread Size: 3/8-16
Metric: M10

Bridge Handles - Aluminum



Material: Matt finish powder coated aluminum
Versions: Visible: with plain through bores for fixing with bolts from above
Concealed: w. threads for fixing w. screws from below
Distance between centers:
Visible: 4.64"/5.12"/5.28"/6.56"/7.84"
Metric: 116 / 128 / 132 / 164 / 196 mm
Concealed: 4"/4.48"/5.12"/6.4"/7.68"
Metric: 100 / 112 / 128 / 160 / 192 mm
Standard color: black. Other colors available on request - MOQs apply

Ledge Handles - Aluminum



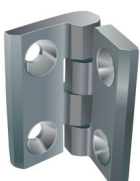
Material: matt finish die-cast aluminum
Distance between centers: 4.4"/5.6"
Metric: 110 / 140 mm
Standard thread size: 1/4-20
Metric: M6
Options: DBCs of any length - MOQs apply

Plastic Handles



Material: matt finish glass filled nylon or gloss finish thermoset
Versions: male (zinc plated steel threads), female (molded threads) or self fixing (push-fit)
Thermoset handle lengths: 1.6"/2.4"/3.2"/3.8"/4.4"
Metric: 40 / 60 / 80 / 95 / 110 mm
Nylon handle lengths: 1.6"/2"/2.6"/3.2"/3.6"
Metric: 40 / 50 / 65 / 80 / 90 mm
Standard thread/bore sizes: from 5/16-18 to 1/2-13
Metric: M6 to M12, from 5 to 12mm
Standard color: black. Other colors available on request - MOQs apply

Plastic Hinges



Material: glass filled nylon
Versions: fixed, detachable, left and right handed
Sizes: many different sizes available. Contact our Sales Team to discuss your requirements.

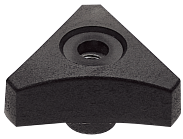
Revolving Handles



Material: matt finish glass filled nylon or gloss finish thermoset with zinc plated steel thread
Versions: fixed or folding handles
Handle lengths: Various sizes from 2" to 3.88"
Metric: 50 to 97 mm
Standard thread sizes: from 5/16-18 to 1/2-13
Metric: M6 to M12
Standard color: black. Other colors available on request - MOQs apply

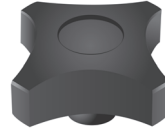


Trilobe Knobs



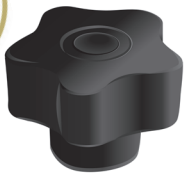
Material: matt finish nylon or gloss finish thermoset
Versions: male (zinc plated steel threads), female (brass inserts) or threaded right through (brass inserts)
Sizes: .84" / 1" / 1.12" / 1.6" / 2" / 2.4" / 3.2" / 4"
 Metric: 21 / 25 / 28 / 40 / 50 / 60 / 80 / 100 mm
Standard thread sizes: from #10-32 to 5/8-11
 Metric: M5 to M16
Standard color: black. Other colors available on request - MOQs apply

Star Knobs



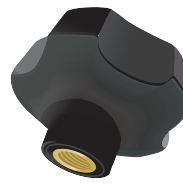
Material: matt finish nylon or gloss finish thermoset
Versions: male (zinc plated steel threads), female (brass inserts) or threaded right through (brass inserts)
Sizes: .84" / 1" / 1.12" / 1.6" / 2" / 2.4" / 3.2" / 4"
 Metric: 21 / 25 / 28 / 40 / 50 / 60 / 80 / 100 mm
Standard thread sizes: from #10-32 to 5/8-11
 Metric: M5 to M16
Standard color: black. Other colors available on request - MOQs apply

Soft Touch Lobe Knobs



Material: polypropylene substrate with TPE overmold (soft touch)
Versions: male (zinc plated steel threads), female (brass inserts) or threaded right through (brass inserts)
Sizes: 1.12" / 1.6" / 2" / 2.4"
 Metric: 28 / 40 / 50 / 60 mm
Standard thread sizes: from #10-32 to 1/2-13
 Metric: M5 to M12
Standard color: black with black cap.
 Other color (combinations) possible MOQs apply

Lobe Knobs



Material: matt finish glass filled nylon or gloss finish thermoset
Versions: male (zinc plated steel threads), female (brass inserts) or threaded right through (brass inserts)
Sizes: 1.12" / 1.2" / 1.6" / 2" / 2.4" / 3"
 Metric: 28 / 30 / 40 / 50 / 60 / 75 mm
Standard thread sizes: from #10-32 to 1/2-13 (M5 to M12)
Standard color: black. Other colors available on request - MOQs apply
Options: some lobe knobs are available with (logo) caps in different colors - MOQs apply

Fluted Knobs - Thermoplastic



Material: matt finish nylon or gloss finish thermoset
Versions: male (zinc plated steel threads), female (brass inserts) or threaded right through (brass inserts)
Sizes: .84" / 1" / 1.12" / 1.6" / 2" / 2.4" / 3.2" / 4"
 Metric: 21 / 25 / 28 / 40 / 50 / 60 / 80 / 100 mm
Standard thread sizes: from #10-32 to 5/8-11
 Metric: M5 to M16
Standard color: black. Other colors available on request - MOQs apply

Fluted Knobs - Thermoset



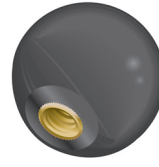
Material: gloss finish thermoset
Versions: male (zinc plated steel threads), female (brass inserts) or threaded right through (brass inserts)
Sizes: .84" / 1" / 1.12" / 1.6" / 2" / 2.4" / 3.2" / 4"
 Metric: 21 / 25 / 28 / 40 / 50 / 60 / 80 / 100 mm
Standard thread sizes: from #10-32 to 5/8-11
 Metric: M5 to M16
Standard color: black. Other colors available on request - MOQs apply

Fluted Knobs - Thermoset



Material: gloss finish thermoset
Versions: male (zinc plated steel threads), female (brass inserts) or threaded right through (brass inserts)
Sizes: .84" / 1" / 1.12" / 1.6" / 2" / 2.4" / 3.2" / 4"
 Metric: 21 / 25 / 28 / 40 / 50 / 60 / 80 / 100 mm
Standard thread sizes: from #10-32 to 5/8-11
 Metric: M5 to M16
Standard color: black. Other colors available on request - MOQs apply

Ball Knobs



Material: matt finish nylon or gloss finish thermoset
Versions: female - molded threads, brass inserts or self fixing (push fit in nylon knobs or fitted with tolerance ring for thermoset knobs)
Standard color: black. Other colors available on request - MOQs apply

Button & Thumbscrew Knobs



Material: matt finish nylon
Versions: male (zinc plated steel threads), female (molded threads) or self fixing (push fit)
Sizes: from .60" to 1.6"
 Metric: 15 to 40 mm
Standard color: black. Other colors available on request - MOQs apply

Knurled Knobs



Material: matt finish nylon
Versions: male (zinc plated steel threads), female (molded threads) or self fixing (push fit)
Sizes: .5" and .75"
 Metric: 13 / 19 mm
Standard thread sizes: 8-32
 Metric: M5
Standard color: black. Other colors available on request - MOQs apply

LOW COST TOOLING

FAST TURN-AROUND



Printed Control Knobs



Material: matt finish nylon
Standard version: to fit a 6mm D-shaft
Options: pad printing, engraving, hot stamping, silk screening, laser marking, and spray painting.
Custom markings are our specialty.
Standard color: black. Other colors available on request - MOQs apply



Instrument Knobs



A huge range of instrument and military knobs is available from within our group. MOQs may apply. Contact our Sales Team to discuss your requirements.



Typhoon Knobs



Material: matt finish nylon and gloss or matt finish thermoset
Versions: male (zinc plated steel threads), female (brass inserts) or threaded right through (brass inserts)
Sizes: 1.25" and 1.375"
Standard thread sizes: 1/4-20 and 5/16-18
Standard color: black. Many other colors available - MOQs apply



Plastic Wing Knobs



Material: matt finish nylon
Versions: male (zinc plated steel threads), female (brass inserts) or threaded right through (brass inserts). Other variations available - single wing or double wing
Sizes: 1.04" / 1.12" / 1.28" / 1.6" / 2" / 2.4"
Metric: 26 / 28 / 32 / 40 / 50 / 60 mm
Thread sizes: from #10-24 to 3/8-16
Metric: M4 to M10
Standard color: black. Other colors available on request - MOQs apply



Index Plungers



Material: matt finish glass filled nylon knobs with burnished steel or stainless steel threads/plungers
Versions: with or without rest position, with or without fixing plate
Sizes: .84" / 1" / 1.24" Metric: 21 / 25 / 31 mm
Standard thread sizes: from 3/8"-16" to 5/8"-11"
Metric: M1 to M16
Plunger diameters: .20" / .24" / .32"
Metric: 5 / 6 / 8 mm
Standard color (plastic part): black.
Other colors available on request - MOQs apply



Square Tube Bushing



Material: matt finish glass filled nylon with nickel plated brass inserts
Versions: round and square
Diameters: 30 / 40 / 50 / 60 mm with wall thicknesses of 1.0 / 1.5 / 2.0 / 2.5 / 3.0 / 4.0 mm
Thread sizes: from M8 to M16
Standard color: black. Other colors available on request - MOQs apply



Cam Plungers



Material: burnished steel or stainless steel with thermoplastic cap
Standard thread sizes: M20
Plunger diameters: .32" / .40" / .48"
Metric: 8 / 10 / 12 mm
Height: 2.72" Metric: 69 mm
Handle length to center: 1.48" burnished steel, 2.08" stainless steel. Metric: 37mm to 52mm



Heavy Duty Leveling Feet



Material: matt finish glass filled nylon bases with inc plated steel or stainless steel threaded rods
Versions: with or without bolt-down holes, with or without rubber anti-slip plates
Base diameters: 1.2" / 1.6" / 1.8" / 2" / 2.4" / 3.2" / 4" / 4.8"
Metric: 30 / 40 / 45 / 50 / 60 / 80 / 100 / 120 mm
Rod sizes: from 5/16"-18" Metric: M8 to M24
Lengths: from 1" to 8" Metric: 25 to 200mm
Standard color: black. Other colors available on request - MOQs apply.
Options: nickel plated rods - MOQs apply. For maximum flexibility, all base sizes can be used with any rod



Index Plungers - with Lift Rings



Material: nickel plated steel housing with stainless steel pin
Standard thread sizes: from 5/16"-18" to 1/2"-13"
Metric: M6 to M12
Plunger diameters: .16" / .20" / .24" / .32"
Metric: 4 / 5 / 6 / 8 mm



Food Equipment Components



We make a wide assortment of parts for all types of indoor and outdoor ovens and grills.



NEW

Machined and/or die-casting

- Fantastic prices for custom tooling
- High quality casting and machining facilities
- Low MOQs
- Castings available in multiple materials and grades e.g. aluminum, steel, stainless steel etc.
- Powder-coat and painted castings available in most Pantone colors



NEW

Complete Sub-Assemblies Plastic and Metal Parts

- EHC can now offer an extremely competitive option on complete sub-assemblies, including levers/arms, spindles and casings, as well as other parts connected to the existing molded parts that we currently supply to you.
- Use our efficient sourcing capabilities to test our competitiveness and to provide you with a great price for your parts and sub-assemblies.



NEW

Metal Stampings Forging and Pressings

- From small electronic brass terminals right up to 250 mm steel wheels
- Lowest prices for brass, steel and stainless steel material components
- Molding machines available from 15 to 3000 tons
- Fantastic tooling prices and low MOQs
- Send drawings or samples for free quotations



Custom Moldings and Tooling

We have the capability to competitively quote for all of your component needs. We can quote for any custom molding and we are very confident our prices will astound you!

Whatever the size, shape or material required, we are certain that our service, our products' quality and competitiveness will exceed all your expectations. Electronic Hardware Corporation is ISO 9000: 2001 certified.

- High quality, high-tech molding capability
- Access to unlimited production capacity on molding machines ranging from 15 tons up to 3000 tons
- Vast range of material options: most thermoset and thermoplastic materials. (including PA, PP, ABS and PVC) Engineering grade materials available
- 'Soft Touch' TPE overmolding special option on many parts
- Color options in most Pantone colors
- Extremely competitive costs for high quality tooling
- Free tooling can be offered on high volume production jobs, or if the component is attractive to be added to EHC's own range of products
- Painting/Marking/Decorative Options, Laser Marking, Pad Printing, Hot Stamping, Engraving, Silk Screening, Spray Painting
- Consolidated and speedy shipping route from China to EHC's New York-based distribution center
- Kitting and stocking available at EHC's Farmingdale, New York warehouse





With more than 45 years of successful design and manufacturing experience in plastic and metal components and assemblies, ISO approved EHC and its affiliated companies provide a mature and efficient Supply Chain operation for Engineering, Tooling, Manufacturing and Distribution world-wide. Our network of operations reaches world-wide from our locations at:

Smart-Sourcing, Inc. (offices in New York, USA), Shanghai (Ningbo, China) a solution-oriented company that specializes in assisting companies in lowering product costs by outsourcing manufacturing to China for plastics, metals, and electronic assemblies

Electronic Hardware Corporation (New York, USA), the worlds largest supplier of knobs for over 45 years, not only provides plastic and metal industrial components and assemblies, but specializes in offering custom engineered solutions to meet your particular manufacturing needs.

Our overseas facilities provide the benefit of low pricing while maintaining quality for tooling and manufacturing. We have developed key low-cost manufacturing facilities that are able to meet the most stringent U.S. and European specifications. Our highly qualified team has over 35 engineers, quality and logistics personnel in China.

Over the past eight years we have selectively partnered with manufacturing companies with expertise in molding, casting, machining, and metal forming.

We work closely with our affiliates in the design, engineering, tooling, and development of new products for both the European and U.S. markets. (In just the past 18 months we have introduced over 100 new hardware items to our already formidable selection of parts.)

EHC's well-founded reputation as the worlds largest manufacturer of knobs, is expanding to include Handles and Hardware for both the Electronic and Industrial markets. Our new outsourcing capabilities now make it possible to extend all of the benefits of global manufacturing to our valued customers.

Send us an rfq and your drawing and we'll be glad to send you a quote that you'll be impressed with.



Global Manufacturing & Distribution Network



*Beyond control knobs ...
Components and assemblies within your reach.*

Electronic Hardware Corporation
320 Broad Hollow Road, Farmingdale, New York 11735

Global Facilities
New York, U.S.A.
Bristol, U.K.
Ningbo, China
Shanghai, China

PHONE: 631.752.1950
FAX: 631.752.1971
WWW: ehcunltd.com
EMAIL: sales@ehcunltd.com
1-800-752-1680

www.ehcunltd.com

